



Motorlock STEP 535

– Powerful motorlock in narrow profile

FreeDrive®

STEP 535 is a powerful and fast motor lock for door environments with high demands on safety

The technical advanced hook bolt is extremely strong, fast and withstands great stresses. The lock case is made of stainless steel and has a modern bolt placement with the hook bolt and latch bolt located in the center of the lock case.

Adapted for use in door environments with the absolutely toughest intrusion protection requirements. The lock meets the requirements in Class 5 according to SSF 3522, and in Grade 7 according to EN 14846.

Motorlock in narrow profile

STEP 535 is constructed with 35 mm back set.

Manipulation protected block function

A block function automatically block the hook bolt when locked. At the same time, an indication locates the blocks position so you can trust that it really is locked. The block function is completely protected from access and thus ensures protection from manipulation.

Control unit with many smart features

The control unit uses encrypted communication AES-128 for locking, unlocking and status indications. It can handle up to two motor locks. These can be controlled individually or synchronized for connection to access control systems, alarms and essential function. The control unit handles re-entry and day locking.

With unique FreeDrive® technology

The FreeDrive® technology disengages the motor in both locked and unlocked positions, allowing the lock to be independently used electrically and mechanically. STEP 535 can therefore be used to advantage with STEP Exit emergency exit devices.

Fire tested

STEP 535 is fire tested according to EN 14846:2008 in fire resistance class E/EI120.

When it has to work.

STEP
535

Technical data





Art.no	Description
ST535	STEP 535 Motor lock. With modern bolt placement. 35 mm back set.
ST535 KPL	STEP 535 complete set. Incl. ST535, STEP Control unit, STEP Lead cover, 10 m halogen free cable, mechanical strike plate, skrew and magnet set.
ST535 LB	STEP 535 Lock and Control unit set. Incl. ST550, STEP Control unit, 20 cm cable and skrew set.

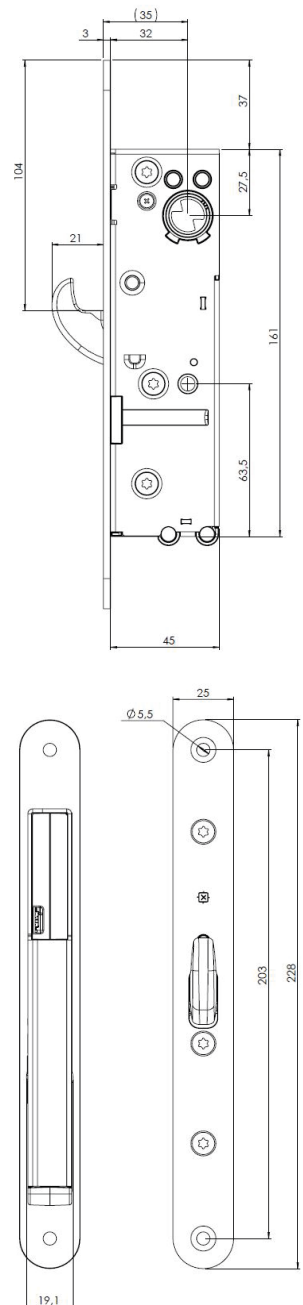
Product characteristics

- Meets the requirements in class 5 per SSF 3522.
- Meets the requirements in Grade 7 per EN 14846.
- Fire tested according to EN 14846:2008 in fire resistance class E/EI120.
- Unlocks in less than 0.1 second.
- Modern bolt placement.
- Lock case in stainless steel.
- FreeDrive® technology.
- Manipulation-protected block function.
- Back set 35 mm.
- Encrypted communication AES-128.
- Power consumption: 32 mA at rest, max 255 mA for about 20 ms.
- Guarantees opening even if the door is subjected to pressure of up to 5 kg.
- Connection to the motor lock is via RS-485.
- Prepared for OSDP.
- Evacuation and re-entry are ensured together with STEP Exit emergency exit devices adapted for motor locks. The control unit handles re-entry and day locking. Meets the requirements according to EN 179:2008.

Environment

- The control unit can handle temperatures from -5 to +70 degrees.
- The lock can withstand temperatures from -20 to +70 degrees.

			
Fire tested: E/EI 120	Meets the requirements according to: EN 179:2008	Factory tested: 1 700 000 cycles	Security: Grade 7 EN 14846 Class 5 SSF 3522



Dimensional drawing STEP 535.

Outstanding use in emergency situations

STEP Exit emergency device

STEP 535 in combination with STEP Exit emergency devices gives you the opportunity to create a safer evacuation exit with unmatched user-friendliness because the pressure is used in exactly the same way as in a normal passage.

FreeDrive® technology gives the products unmatched longevity

STEP 535 is equipped with FreeDrive®. The unique technology disengages the engine and gearbox, which means that they are never affected when the the evacuation device handle is used. This eliminates the wear of the engine and gearbox completely – even though the handle may be used thousands of times every day.



STEP 535 with STEP Exit ST17940-1